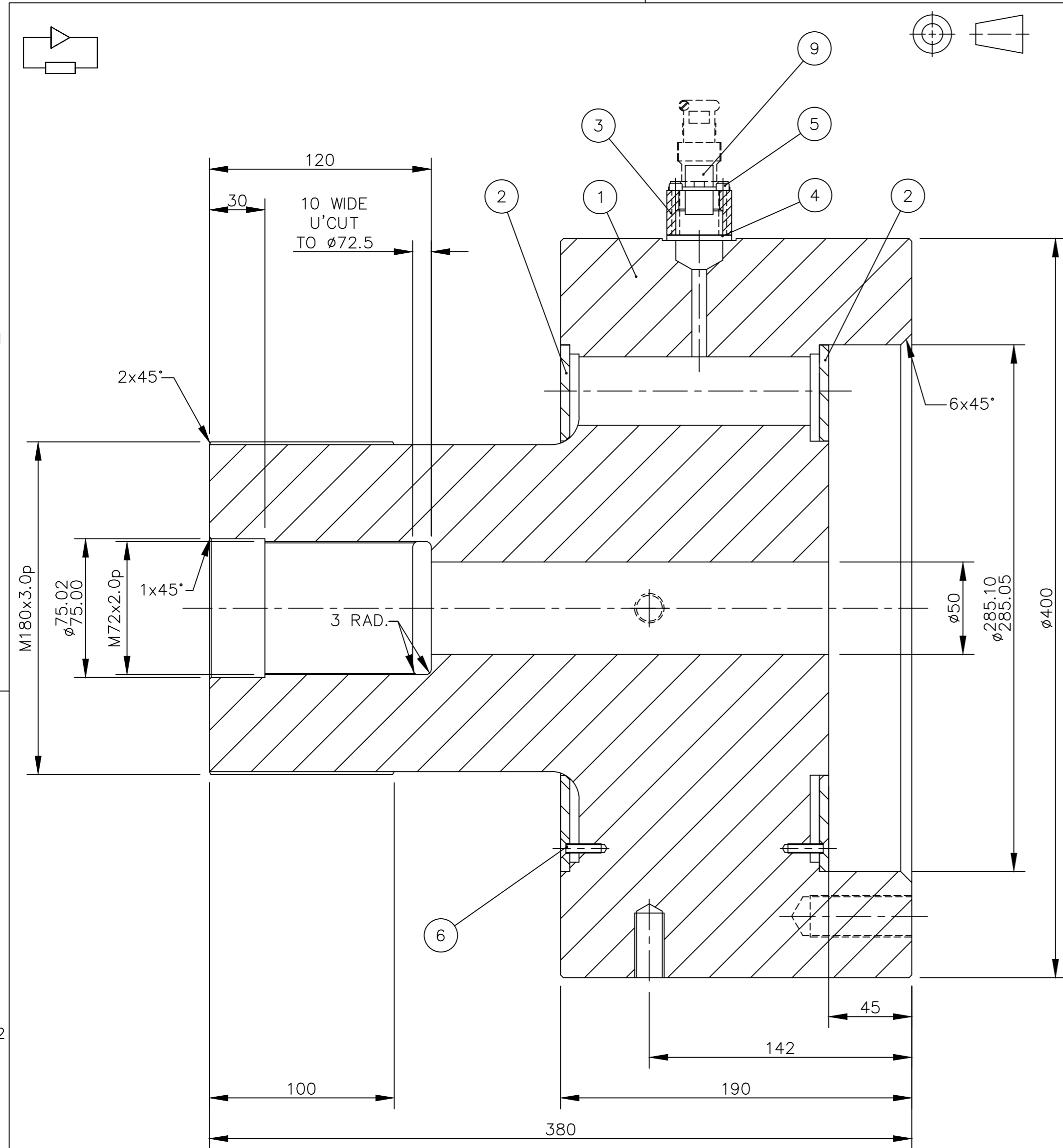


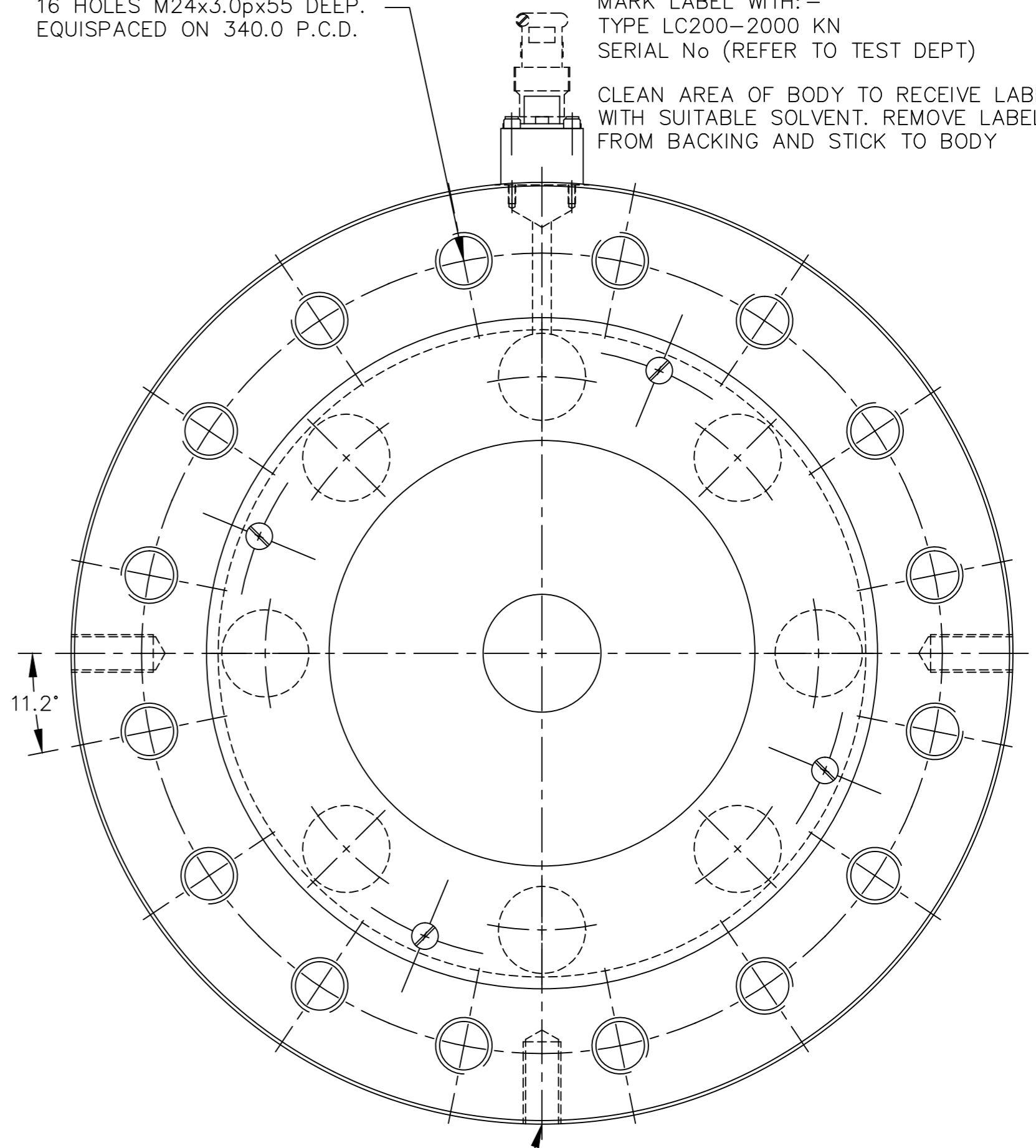
DO NOT SCALE

3rd ANGLE PROJECTION

IF IN DOUBT ASK



16 HOLES M24x3.0p x 55 DEEP.
EQUISPACED ON 340.0 P.C.D.



3 HOLES M16x2.0p x 34 DEEP.
SPACED, AS SHOWN, AROUND
CIRCUMFERENCE.

APPROX. WEIGHT (kg): 180

NOTE:-
STRAIN GAUGE BODY AND WIRE IN
ACCORDANCE WITH D065-4700
MARK LABEL WITH:-
TYPE LC200-2000 KN
SERIAL No (REFER TO TEST DEPT)
CLEAN AREA OF BODY TO RECEIVE LABEL
WITH SUITABLE SOLVENT. REMOVE LABEL
FROM BACKING AND STICK TO BODY

GEOMETRIC CHARACTERISTIC SYMBOLS

maximum material condition	true position	perpendicularity
runout	cylindricity	parallelism
flatness of a surface	basic dimension	concentricity
straightness of a line	datum	symmetry
profile of a surface	roundness	angularity
profile of a line		

FEATURE CONTROL SYMBOL

total tolerance diameter

datum reference

geometric characteristic symbol

tolerance at mmc. as required

Form positional tolerances & related datum are regardless of feature size unless specified.

ISSUE	DATE	REVISIONS	JOB No:	D.C.N.	DRN
1	23/07/03	ORIGINAL ISSUE	61216		R.P.B.
2					
3					
4					
5					
6					
7					
8					
9					

All Dimensions in millimetres & refer to finished sizes
Tolerances:-
No decimal places ±0.4
One decimal place ±0.1
Angular ±0.5°
Squareness 0.1 per 100mm
hole depths to drill point
Surface texture 3.2um
Remove all burrs & break sharp edges rad 0.1/0.5 unless otherwise stated

SERVOTEST © 2003		
TITLE LOAD CELL TYPE LC200-2000kN		
MATERIAL	FINISH	
DATE 23/07/03	SCALE 1:2	DRG. No.
DRN. R.P.BAILEY	CHECKED	C 200-9401

A

B

C