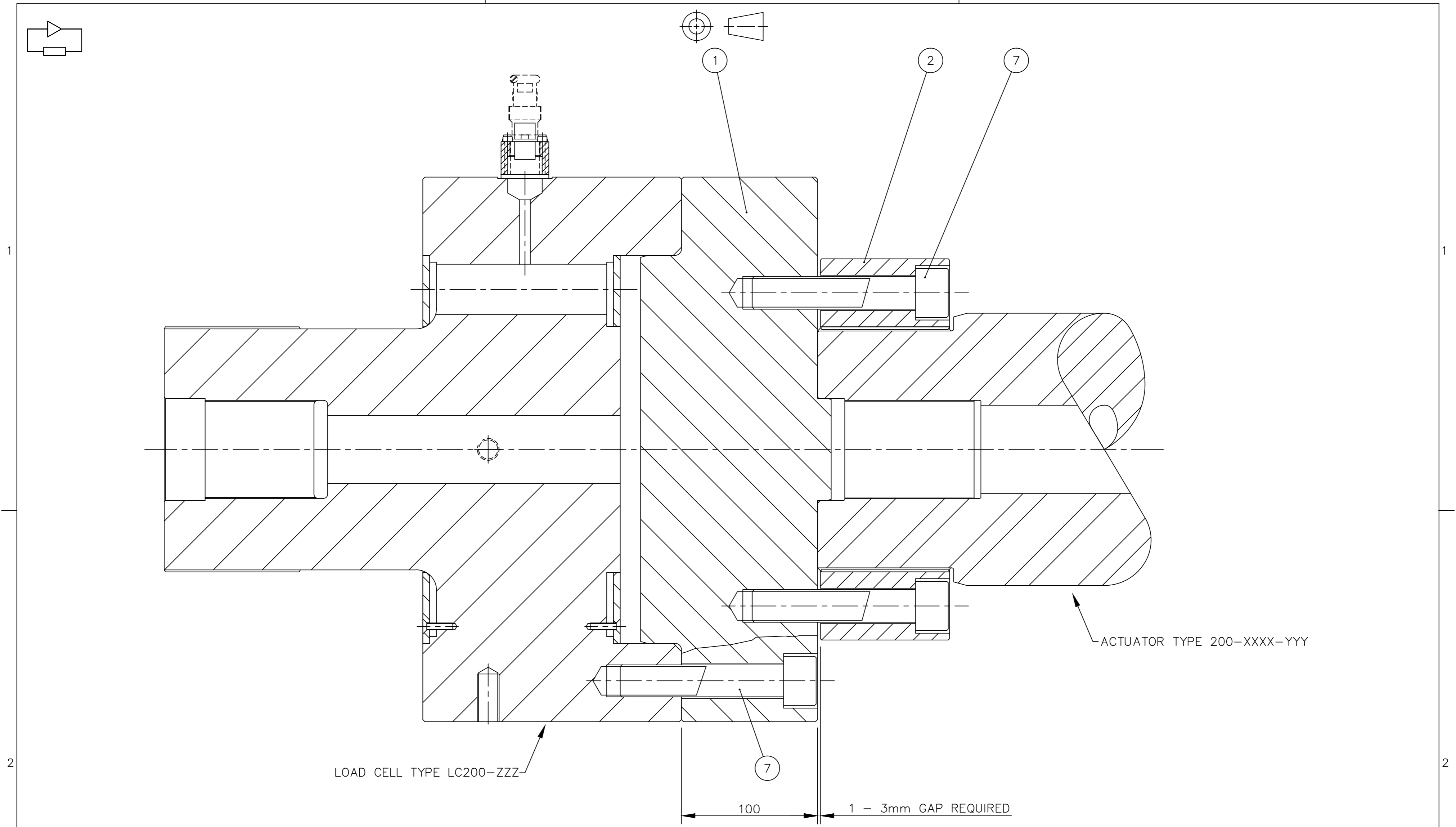


DO NOT SCALE

3rd ANGLE PROJECTION

IF IN DOUBT ASK



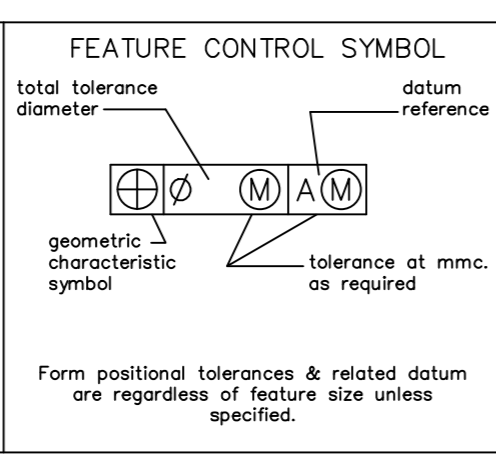
LOAD CELL TYPE LC200-ZZZ

ACTUATOR TYPE 200-XXXX-YYY

100 1 - 3mm GAP REQUIRED

**GEOMETRIC CHARACTERISTIC SYMBOLS**

(M) maximum material condition	⊕ true position	⊥ perpendicularity
↗ runout	⊘ cylindricity	∥ parallelism
▭ flatness of a surface	□ basic dimension	◎ concentricity
— straightness of a line	A datum	≡ symmetry
⌒ profile of a surface		∠ angularity
⌒ profile of a line		○ roundness



ISSUE	DATE	REVISIONS	JOB No:	D.C.N.	DRN
1	23/07/03	ORIGINAL ISSUE	61216		R.P.B.
2					
3					
4					
5					
6					
7					
8					
9					

All Dimensions in millimetres & refer to finished sizes  
 Tolerances: -  
 No decimal places ±0.4  
 One decimal place ±0.1  
 Angular ±0.5°  
 Squareness 0.1 per 100mm  
 hole depths to drill point  
 Surface texture 3.2um  
 Remove all burrs & break sharp edges rad 0.1/0.5 unless otherwise stated

<b>SERVOTEST</b> © 2003		
TITLE LOAD CELL MOUNT KIT (2000kN)		
MATERIAL		FINISH
DATE 23/07/03	SCALE 1:2	DRG. No.
DRN. R.P.BAILEY	CHECKED	C 200-9412

A

B

C